

# *Manuel de programmation de Touch Panel*

[www.kalaytek.com](http://www.kalaytek.com)

Adresse: Blv Med VI - Rés les orchidées III -

Imm C étage 3 Bureau n°13 Mohammedia. -

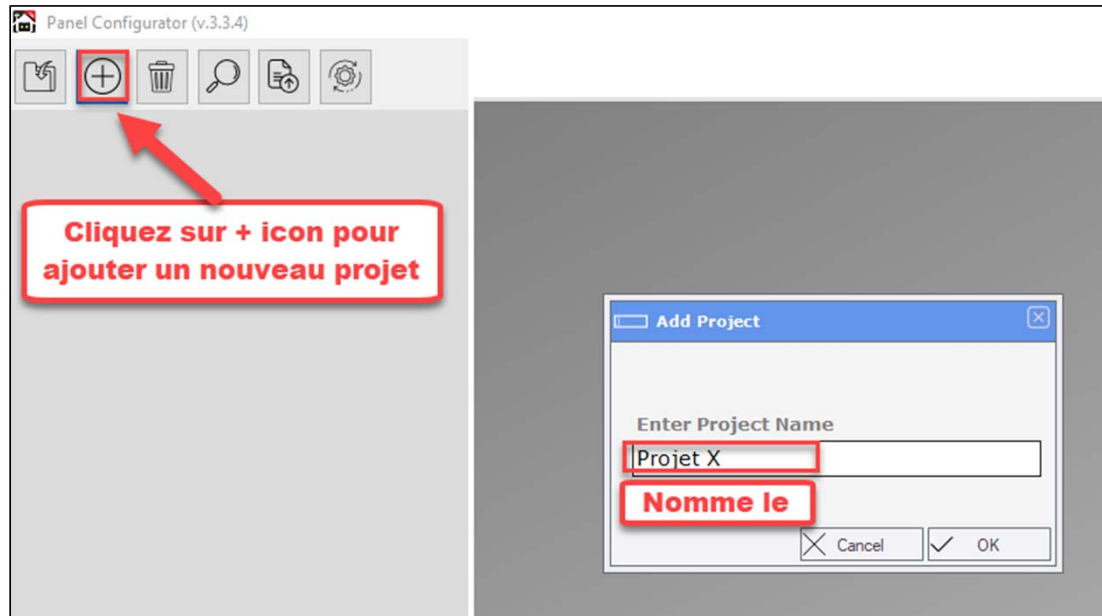
Maroc (à-côté de Marjane)

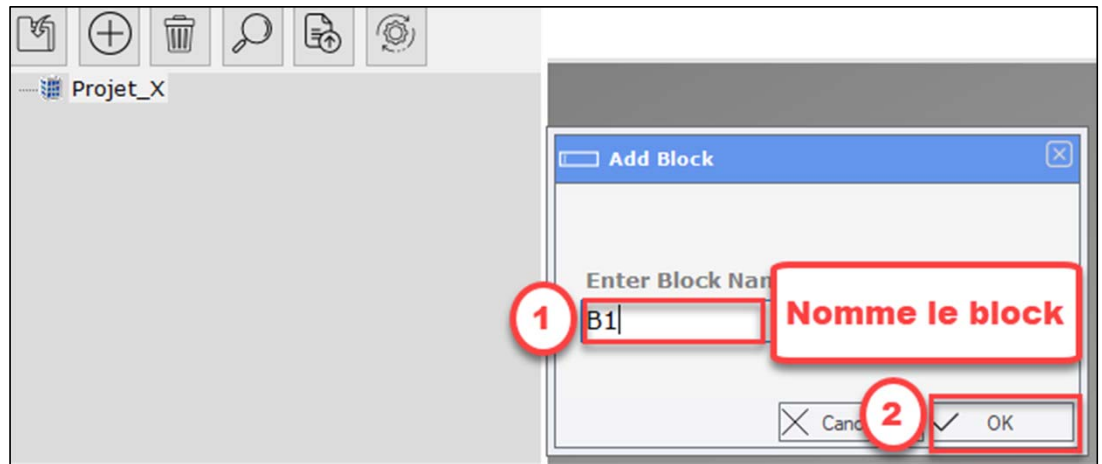
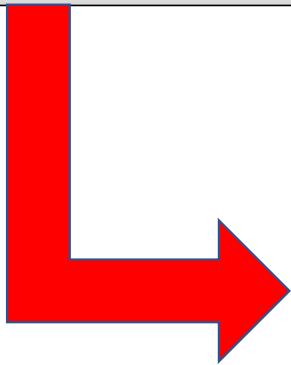
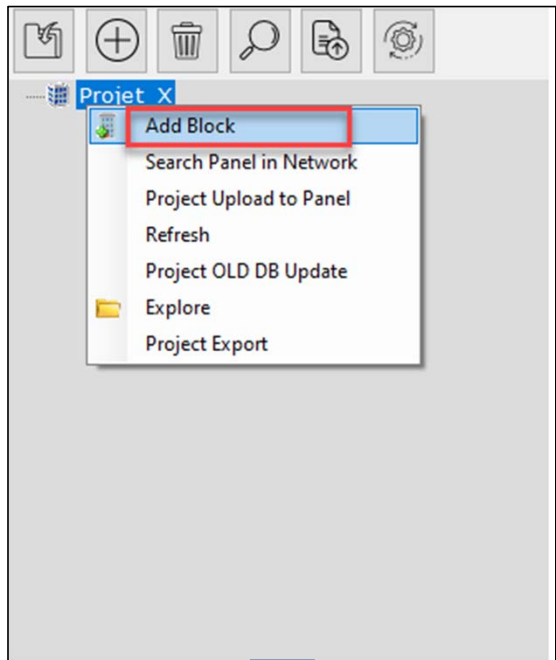
Tel: +212 5 23 28 03 03

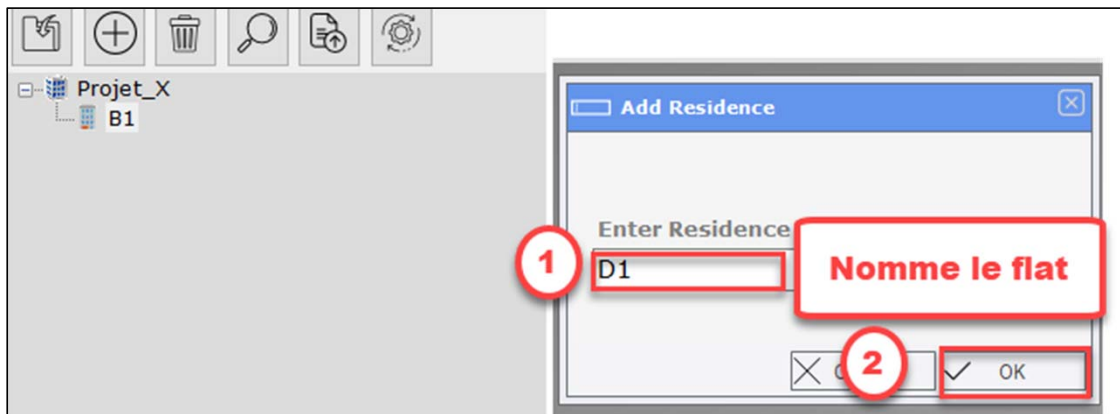
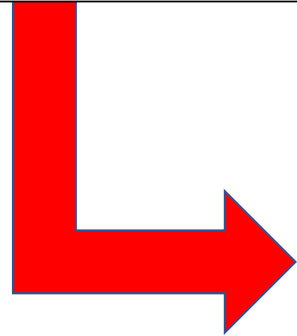
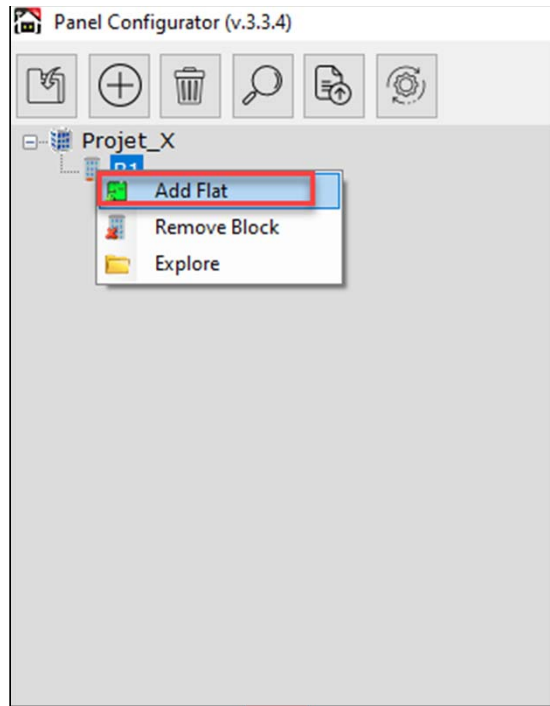
Tel: +212 6 61 06 15 26

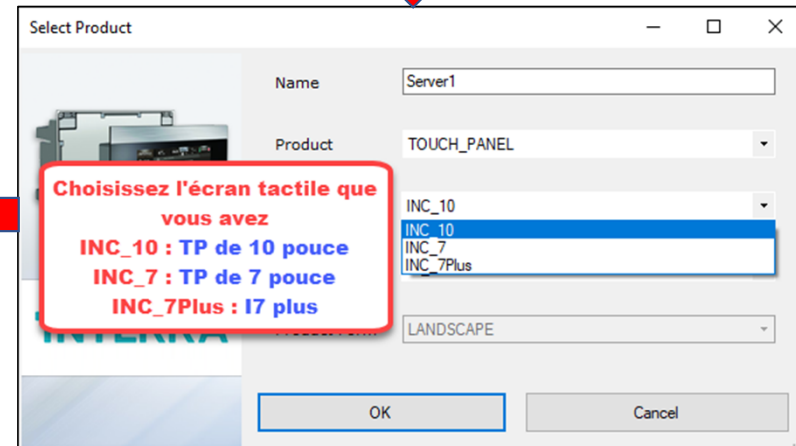
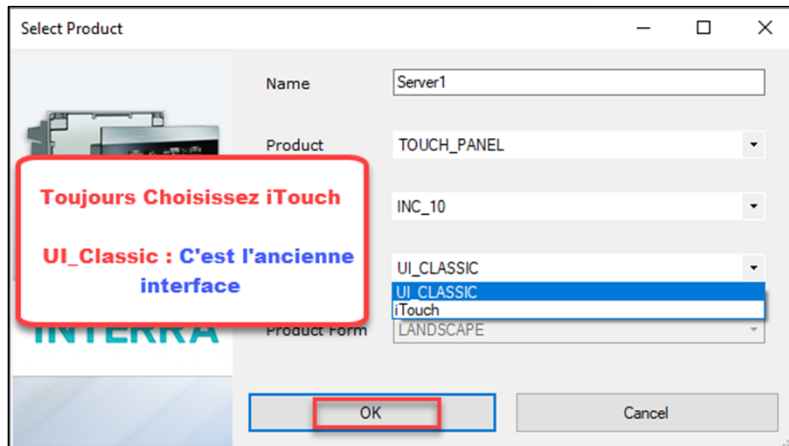
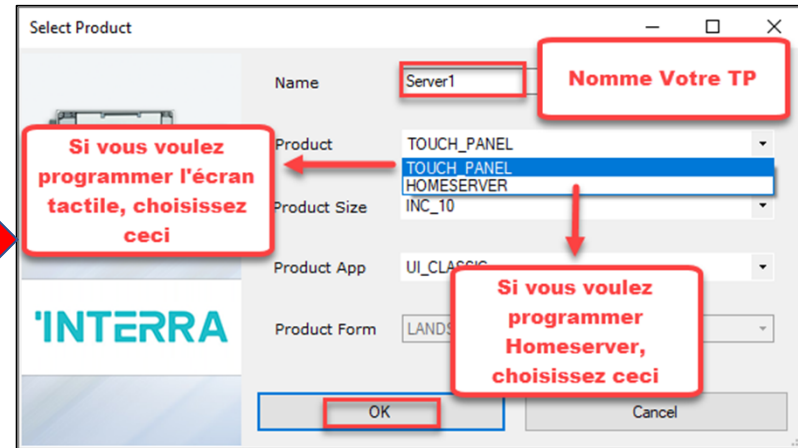
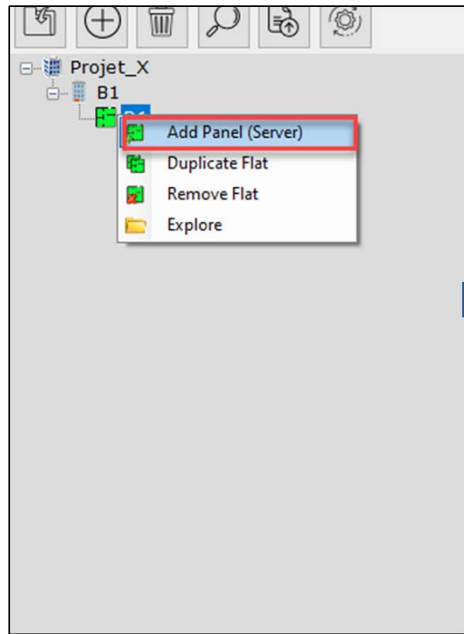
Email: [info@kalaytek.com](mailto:info@kalaytek.com)











B1 -> D1 -> Server1

- ▣ Locations
- ▣ Scenarios
- ▣ Schedules

**Locations :** Pour ajouter l'Eclairage, VR , Variation ...

**Scenarios :** Pour ajouter les scenarios comme "tout éteint"

**Schedules :** Pour ajouter un planning comme allumer ce éclairage à une certaine heure

Projet\_X  
B1  
D1  
Server1

D1 -> Server1 -> Locations

New [F5] Save [F2] Delete [F8]

Floors Choose

General

Floor Name Etage

Floors Order 1

MultiLanguages

Turkish  
English  
Arabic  
Russian  
Azerb.  
Spanish  
German  
French  
Kazakh  
Turkmen  
Persian  
Polish  
Hungarian  
Dutch  
Italian  
Portugues  
Romany  
Croatian

B1 -> D1 -> Server1

- Locations
- Scenarios
- Schedules



Projet\_X  
B1  
D1  
Server1

D1 -> Server1 -> Locations

New [F5] Save [F2] Delete [F8]

Floors Choose

General

Floor Name RDC

Floors Order 2

MultiLanguages

Turkish  
English  
Arabic  
Russian  
Azerb.  
Spanish  
German  
French  
Kazakh  
Turkmen  
Persian  
Polish  
Hungarian  
Dutch  
Italian  
Portugues  
Romany  
Croatian

B1 -> D1 -> Server1

- Locations
- Etage



- Locations
  - Etage
  - RDC
- Scenarios
- Schedules

Projet\_X  
B1  
D1  
Server1

**Ajoutez l'éclairage , variations , volet roulant , les rideaux...**

Controls

New [F5] Save [F2] Delete [F8] Select ALL Delete Selected

SMART HOME -> LIGHTING

Name: Spot 1

Device Type: KNX

Control Type: NORMAL\_LIGHT

View Order: 1

On/Off Address: 0/1/0

On/Off Status Address: 0/1/1

Image Reverse:

KNX OBJECTS (DoubleClick to set) Import ESF

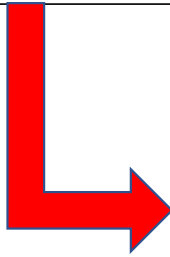
Location	Name	Addr 1	Addr 2	Addr 3	Addr 4

**On va ajouter Spot 1 qu'on a dans le combo**

**L'adresse de ON/OFF**

**L'adresse de retour de l'état**

Locations  
Etage  
Chambre 1



+ Add Channels | X Delete | Download | Info | Reset | Unload | Print

Devices	Number	Name	Object Function	Description	Group Address	Data Type
Dynamic Folders	21	Out1	Status	Spot 1 FB	0/1/1	switch
1.1.1 iSwitch - Room Controller	22	Out1	Scene			
1.1.2 4-Channel Combo Output Module	23	Out1	On/Off	Spot 1	0/1/0	switch
	24	Out1	Timer			switch
	37	Out2	Status	Spot 2 FB	0/1/3	switch
	38	Out2	Scene			
	39	Out2	On/Off	Spot 2	0/1/2	switch
	40	Out2	Timer			switch
	53	Out3+4	Up/Down			up/down



Projet\_X  
B1  
D1  
Server1

Controls

New [F5] Save [F2] Delete [F8] Select ALL Delete Selected

SMART HOME -> LIGHTING

Spot 1

Name: Spot 2

Device Type: KNX

Control Type: NORMAL\_LIGHT

View Order: 2

On/Off Address: 0/1/2

On/Off Status Address: 0/1/3

Image Reverse:

KNX OBJECTS (DoubleClick to set) Import ESF

Location	Name	Addr 1	Addr 2	Addr 3	Addr 4

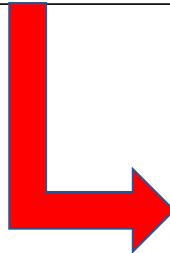
B1 -> D1 -> Server1

Locations  
Etage  
Chambre 1  
RDC  
Scenarios  
Schedules

**On va ajouter Spot 2 qu'on a dans le combo**

**L'adresse de ON/OFF**

**L'adresse de retour de l'etat**



+ Add Channels | X Delete | Download | Info | Reset | Unload | Print

Devices	Number	Name	Object Function	Description	Group Address	Data Type
Dynamic Folders	21	Out1	Status	Spot 1 FB	0/1/1	switch
1.1.1 iSwitch - Room Controller	22	Out1	Scene			
1.1.2 4-Channel Combo Output Module	23	Out1	On/Off	Spot 1	0/1/0	switch
	24	Out1	Timer			switch
	37	Out2	Status	Spot 2 FB	0/1/3	switch
	38	Out2	Scene			switch
	39	Out2	On/Off	Spot 2	0/1/2	switch
	40	Out2	Timer			switch
	53	Out3+4	Up/Down			up/down

Projet\_X  
B1  
D1  
Server1

Controls

General Details

SMART HOME -> LIGHTING

Name: [ ]

Device Type: KNX

Control Type: **DIM\_LIGHT**

View Order: 3

On/Off Address: 0/0/1

On/Off Status Address: 0/0/2

Image Reverse:

Icon Choose: [ ]

KNX OBJECTS (DoubleClick to set) Import ESF

Location	Name	Addr 1	Addr 2	Addr 3	Addr 4

B1 -> D1 -> Server1

Locations  
Etage  
Chambre 1  
RDC

Spot 1 Spot 2

**Pour ajouter dimmer selectionnez DIM\_Light**



Projet\_X  
B1  
D1  
Server1

Controls

General Details

SMART HOME -> LIGHTING

Name: Spot variation

Device Type: KNX

Control Type: DIM\_LIGHT

View Order: 3

On/Off Address: 0/0/1

Value Address: 0/0/2

Value Address: 0/0/4

Value Status Address: 0/0/5

KNX OBJECTS

Location	Name	Addr 1	Addr 2	Addr 3	Addr 4

B1 -> D1 -> Server1

Locations  
Etage  
Chambre 1  
RDC  
Scenarios  
Schedules

Spot 1 Spot 2

**On va ajouter Spot variation qu'on a dans le dimmer**

**L'adresse de retour de l'etat de ON/OFF**

**L'adresse de Absolutre**

**L'adresse de retour de l'etat de absolute**



Devices

+ Add Channels | - Delete | Download | Info | Reset | Unload | Print

Number	Name	Object Function	Description	Group Address
0	General	Send cycles		
10	Output A	Channel output	On/Off	0/0/1
11	Output A	Relative dimming(4bit)	Relative	0/0/3
12	Output A	Absolute dimming(8bit)	Absolute	0/0/4
13	Output A	Response state(1bit)	On/Off FB	0/0/2
14	Output A	Response state(1byte)	Absolute FB	0/0/5
30	Output B	Channel output		
31	Output B	Relative dimming(4bit)		
50	Output C	Channel output		
51	Output C	Relative dimming(4bit)		
70	Output D	Channel output		
71	Output D	Relative dimming(4bit)		

Projet\_X  
B1  
D1  
Server1

**Controls**

New [F5] Save [F2] Delete [F8]

Generalk Details ACs Choose

Name: Clim Chambre 1

ACC Mode: None

View Order: 1

Visibility:

[Copy All Locations Same.](#)

LIGHTING

CURTAIN

SHUTTER

HVAC

GENERAL

B1 -> D1 -> Server1

Locations  
Etage  
Chambre 1  
RDC



Projet\_X  
B1  
D1  
Server1

**Controls**

New [F5] Save [F2] Delete [F8]

Generalk Details ACs Choose

Name:

ACC Mode: None

View Order:

Visibility:

[Copy All Locations Same.](#)

LIGHTING

CURTAIN

SHUTTER

HVAC

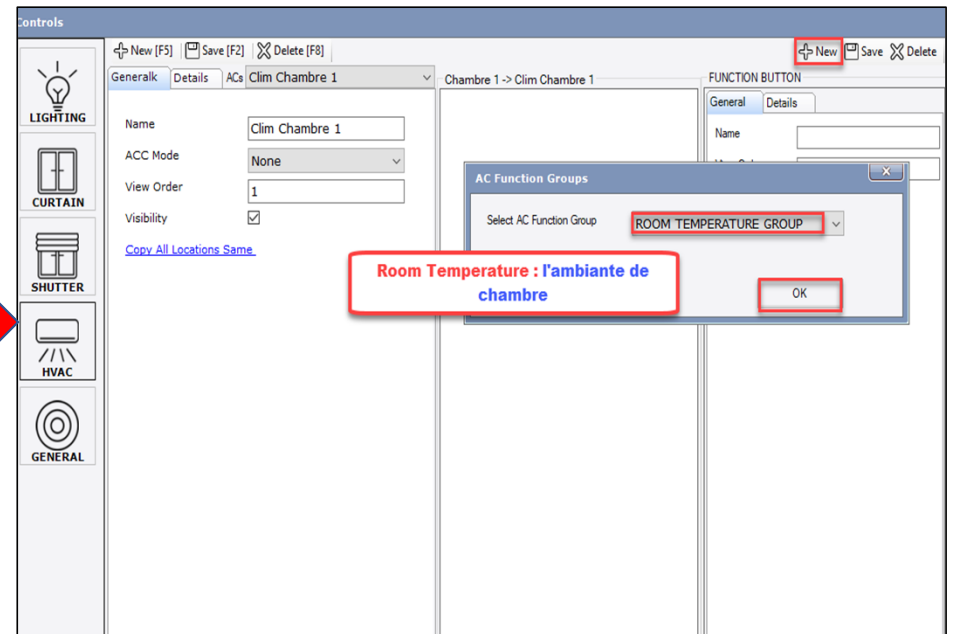
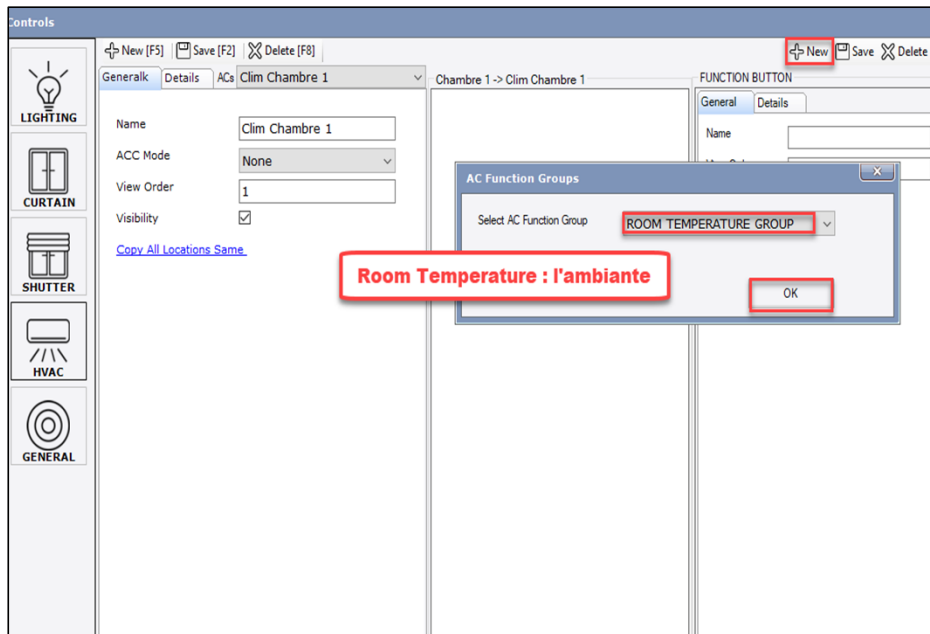
GENERAL

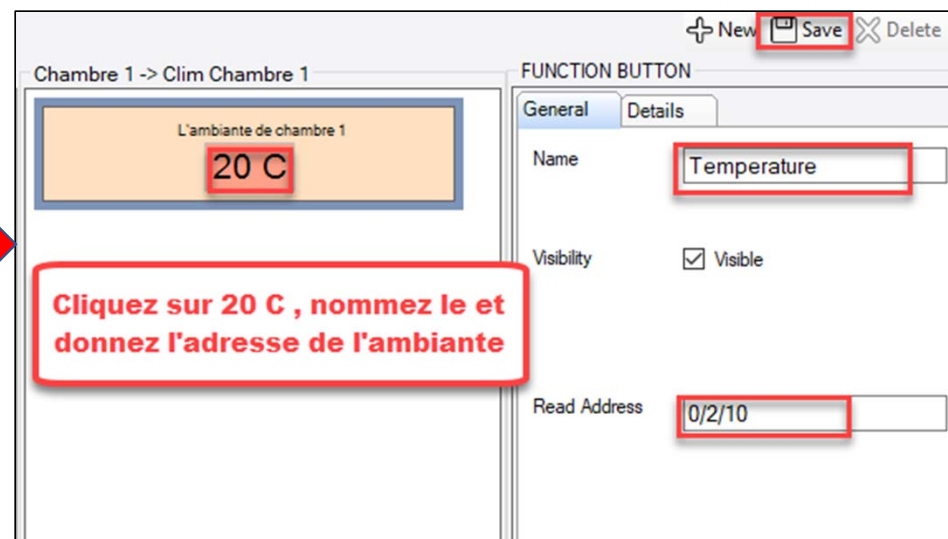
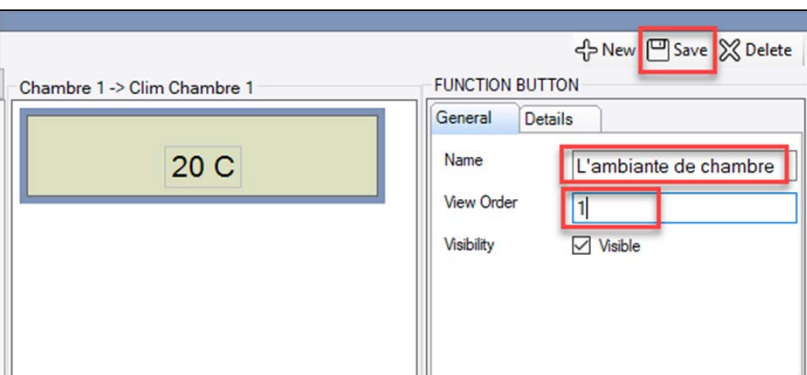
**Pour ajouter clim**

B1 -> D1 -> Server1

Locations  
Etage  
Chambre 1  
RDC  
Scenarios  
Schedules

# Temp d'ambiante





Number ^	Name	Object Function	Description	Group Address
1	Control On/Off [DPT_1.001]	0-Off, 1-On	ON/OFF	0/2/0
2	Control Mode [DPT_20.105]	0-Auto, 1-Heat, 3-Cool, 9...		
3	Control Mode Cool/Heat [DPT_1.100]	0-Cool, 1-Heat	MODE COOL/HEAT	0/2/2
12	Control Fan Speed/3 Speeds [DPT 5.010]	1 Speed1, 2 Speed2, 3 Sp...	FAN SPEED	0/2/4
13	Control Fan Speed Man/Auto [DPT 1.002]	1-Auto	FAN AUTO	0/2/6
14	Control Fan Speed 1 [DPT 1.002]	1-Set Fan Speed 1		
15	Control Fan Speed 2 [DPT 1.002]	1-Set Fan Speed 2		
16	Control Fan Speed 3 [DPT 1.002]	1-Set Fan Speed 3		
18	Control Vanes U-D/5 pos [DPT 5.001]	0%-29% Pos1, 30%-49%...		
27	Control Setpoint Temperature [DPT 9.001]	°C	TEMPERATURE	0/2/8
29	Control Ambient Temperature [DPT 9.001]	°C	TEMPERATURE D'AMBIAN...	0/2/10

## On/off clim

The screenshot shows the 'Controls' software interface. On the left, there is a vertical toolbar with icons for LIGHTING, CURTAIN, SHUTTER, and HVAC. The main workspace is titled 'Chambre 1 -> Clim Chambre 1'. It contains a 'FUNCTION BUTTON' configuration area with a 'General' tab. The 'Name' field is set to 'Clim Chambre 1', 'ACC Mode' is 'None', 'View Order' is '1', and 'Visibility' is checked. A 'New' button is highlighted with a red box. Below this, an 'AC Function Groups' dialog box is open, showing 'POWER GROUP' selected in a dropdown menu and 'On/Off clim' highlighted in a red box. An 'OK' button is also highlighted in a red box. A red arrow points from this dialog box towards the right screenshot.

The screenshot shows the 'Controls' software interface after the configuration. The 'FUNCTION BUTTON' configuration area now displays a preview of the climate control interface. The preview shows a temperature display 'L'ambiante de chambre 1' with '20 C' and two buttons labeled 'ON' and 'OFF'. The 'FUNCTION BUTTON' configuration area has a 'Details' tab selected. The 'Name' field is now 'On/Off Clim', 'View Order' is '2', and 'Visibility' is checked. The 'Save' button is highlighted with a red box.

Chambre 1 -> Clim Chambre 1

FUNCTION BUTTON

General Details

Name: On

View Order: 1

Visibility:  Visible

Set Address: 0/2/0

Read Address: 0/2/1

Value Type: 1 Bit

Set Value(DEC): 01

Active Value(HEX): 01

Remplir avec l'adresse de ETS

Choisissez l'icône de "ON"

Chambre 1 -> Clim Chambre 1

FUNCTION BUTTON

General Details

Name: OFF

View Order: 2

Visibility:  Visible

Set Address: 0/2/0

Read Address: 0/2/1

Value Type: 1 Bit

Set Value(DEC): 00

Active Value(HEX): 00

Remplir avec l'adresse de ETS

Choisissez l'icône de "OFF"

Info -> Refresh -> Unload -> Print

Number	Name	Object Function	Description	Group Address	Data Type	Prio
1	Control On/Off [DPT_1.001]	0-Off, 1-On	ON/OFF	0/2/0	1-bit, switch	Low
2	Control Mode [DPT_20.105]	0-Auto, 1-Heat, 3-Cool, 9...			1-byte, HVAC control mode	Low
3	Control Mode Cool/Heat [DPT_1.100]	0-Cool, 1-Heat	MODE COOL/HEAT	0/2/2	1-bit, cooling/heating	Low
12	Control Fan Speed/3 Speeds [DPT 5.010]	1 Speed1, 2 Speed2, 3 Sp...	FAN SPEED	0/2/4	8-bit unsigned value, counter pulses (0..255)	Low
13	Control Fan Speed Man/Auto [DPT 1.002]	1-Auto	FAN AUTO	0/2/6	1-bit, boolean	Low
14	Control Fan Speed 1 [DPT 1.002]	1-Set Fan Speed 1			1-bit, boolean	Low
15	Control Fan Speed 2 [DPT 1.002]	1-Set Fan Speed 2			1-bit, boolean	Low
16	Control Fan Speed 3 [DPT 1.002]	1-Set Fan Speed 3			1-bit, boolean	Low
18	Control Vanes U-D/5 pos [DPT 5.001]	0%-29% Pos1, 30%-49%...			8-bit unsigned value, percentage (0..100%)	Low
27	Control Setpoint Temperature [DPT 9.001]	°C	TEMPERATURE	0/2/8	2-byte float value, temperature (°C)	Low
29	Control Ambient Temperature [DPT 9.001]	°C	TEMPERATURE D'AMBIAN...	0/2/10	2-byte float value, temperature (°C)	Low
30	Control Setpoint limitation [DPT 1.001]	0-Disable, 1-Enable	ON/OFF FB	0/2/1	1-bit, switch	Low
51	Status On/Off [DPT_1.001]	0-Off, 1-On			1-bit, boolean	Low
52	Status Mode [DPT_20.105]	0-Auto, 1-Heat, 3-Cool, 9...			1-byte, HVAC control mode	Low
53	Status Mode Cool/Heat [DPT 1.100]	0-Cool, 1-Heat	MODE COOL/HEAT FB	0/2/3	1-bit, cooling/heating	Low
60	Status Fan Speed / 3 Speeds [DPT 5.010]	1-Speed1, 2-Speed2, 3-S...	FAN SPEED FB	0/2/5	8-bit unsigned value, counter pulses (0..255)	Low
61	Status Fan Speed Manual/Auto [DPT 1.002]	0-Manual, 1-Auto	FAN AUTO FB	0/2/7	1-bit, boolean	Low
62	Status Fan Speed 1 [DPT 1.002]	1-Fan is in speed 1			1-bit, boolean	Low
63	Status Fan Speed 2 [DPT 1.002]	1-Fan is in speed 2			1-bit, boolean	Low
64	Status Fan Speed 3 [DPT 1.002]	1-Fan is in speed 3			1-bit, boolean	Low
66	Status Vanes U-D/5Pos [DPT 5.001]	20%-Pos1, 40%-Pos2, 60...			8-bit unsigned value, percentage (0..100%)	Low
75	Status AC Setpoint Temp [DPT 9.001]	°C	TEMPERATURE FB	0/2/9	2-byte float value, temperature (°C)	Low
76	Status AC Return Temp [DPT 9.001]	°C			2-byte float value, temperature (°C)	Low
77	Internal probe temperature [DPT 9.001]	°C			2-byte float value, temperature (°C)	Low
78	External probe temperature [DPT 9.001]	°C			2-byte float value, temperature (°C)	Low
80	Status setpoint Limitation [DPT 1.001]	0-Disable, 1-Enable			1-bit, switch	Low
81	Status Error/Alarm [DPT 1.005]	0-No Alarm, 1-Alarm			1-bit, alarm	Low
82	Error text code [DPT 16.001]	ASCII String			character string, Character String (ISO 8859-1)	Low
83	Status Operation Hour Counter [DPT 13.100]	Number of operating ho...			4-byte signed value, time lag (s)	Low

Chambre 1 -> Clim Chambre 1

FUNCTION BUTTON

General Details

Name

View Order

Visibility  Visible

Set Address

1 Bit

01

Icon Choose

AC Function Groups

Select AC Function Group: CUSTOM BUTTONS GROUP

Custom Button Count: 2

OK

**Pour les modes (cool/heat)**



Chambre 1 -> Clim Chambre 1

FUNCTION BUTTON

General Details

Name: Cool/Heat

View Order: 3

Visibility  Visible

ON OFF

Custom Button Custom Button



Chambre 1 -> Clim Chambre 1

FUNCTION BUTTON

General Details

Name: Heat

View Order: 1

Visibility:  Visible

Set Address: 0/2/2

Read Address: 0/2/3

Value Type: 1 Bit

Value (DEC): 01

Value (HEX): 01

Remplir avec l'adresse de ETS

Choisissez l'icône de "HEAT"

Chambre 1 -> Clim Chambre 1

FUNCTION BUTTON

General Details

Name: Cool

View Order: 2

Visibility:  Visible

Set Address: 0/2/2

Read Address: 0/2/3

Value Type: 1 Bit

Set Value (DEC): 00

Set Value (HEX): 00

Remplir avec l'adresse de ETS

Choisissez l'icône de "HEAT"

Info Reset Unload Print

Number	Name	Object Function	Description	Group Address	Data Type	Priority
1	Control On/Off [DPT_1.001]	0-Off, 1-On	ON/OFF	0/2/0	1-bit, switch	Low
2	Control Mode [DPT_20.105]	0-Auto, 1-Heat, 3-Cool, 9...	MODE COOL/HEAT	0/2/2	1-byte, HVAC control mode	Low
3	Control Mode Cool/Heat [DPT_1.100]	0-Cool, 1-Heat	MODE COOL/HEAT FB	0/2/3	1-bit, cooling/heating	Low
12	Control Fan Speed/3 Speeds [DPT 5.010]	1 Speed1, 2 Speed2, 3 Sp...	FAN SPEED	0/2/4	8-bit unsigned value, counter pulses (0..255)	Low
13	Control Fan Speed Man/Auto [DPT 1.002]	1-Auto	FAN AUTO	0/2/6	1-bit, boolean	Low
14	Control Fan Speed 1 [DPT 1.002]	1-Set Fan Speed 1			1-bit, boolean	Low
15	Control Fan Speed 2 [DPT 1.002]	1-Set Fan Speed 2			1-bit, boolean	Low
16	Control Fan Speed 3 [DPT 1.002]	1-Set Fan Speed 3			1-bit, boolean	Low
18	Control Vanes U-D/S pos [DPT 5.001]	0%-29% Pos1, 30%-49%...			8-bit unsigned value, percentage (0..100%)	Low
27	Control Setpoint Temperature [DPT 9.001]	°C	TEMPERATURE	0/2/8	2-byte float value, temperature (°C)	Low
29	Control Ambient Temperature [DPT 9.001]	°C	TEMPERATURE D'AMBIAN...	0/2/10	2-byte float value, temperature (°C)	Low
30	Control Setpoint limitation [DPT 1.001]	0-Disable, 1-Enable			1-bit, switch	Low
51	Status On/Off [DPT_1.001]	0-Off, 1-On	ON/OFF FB	0/2/1	1-bit, switch	Low
52	Status Mode [DPT_20.105]	0-Auto, 1-Heat, 3-Cool, 9...	MODE COOL/HEAT FB	0/2/3	1-bit, cooling/heating	Low
53	Status Mode Cool/Heat [DPT 1.100]	0-Cool, 1-Heat			1-bit, cooling/heating	Low
60	Status Fan Speed / 3 Speeds [DPT 5.010]	1-Speed1, 2-Speed2, 3-S...	FAN SPEED FB	0/2/5	8-bit unsigned value, counter pulses (0..255)	Low
61	Status Fan Speed Manual/Auto [DPT 1.002]	0-Manual, 1-Auto	FAN AUTO FB	0/2/7	1-bit, boolean	Low
62	Status Fan Speed 1 [DPT 1.002]	1-Fan is in speed 1			1-bit, boolean	Low
63	Status Fan Speed 2 [DPT 1.002]	1-Fan is in speed 2			1-bit, boolean	Low
64	Status Fan Speed 3 [DPT 1.002]	1-Fan is in speed 3			1-bit, boolean	Low
66	Status Vanes U-D/S Pos [DPT 5.001]	20%-Pos1, 40%-Pos2, 60...			8-bit unsigned value, percentage (0..100%)	Low
75	Status AC Setpoint Temp [DPT 9.001]	°C	TEMPERATURE FB	0/2/9	2-byte float value, temperature (°C)	Low
76	Status AC Return Temp [DPT 9.001]	°C			2-byte float value, temperature (°C)	Low
77	Internal probe temperature [DPT 9.001]	°C			2-byte float value, temperature (°C)	Low
78	External probe temperature [DPT 9.001]	°C			2-byte float value, temperature (°C)	Low
80	Status setpoint Limitation [DPT 1.001]	0-Disable, 1-Enable			1-bit, switch	Low
81	Status Error/Alarm [DPT 1.005]	0-No Alarm, 1-Alarm			1-bit, alarm	Low
82	Error text code [DPT 16.001]	ASCII String			character string, Character String (ISO 8859-1)	Low
83	Status Operation Hour Counter [DPT 13.100]	Number of operating ho...			4-byte signed value, time lag (s)	Low

Clim Chambre 1

Chambre 1 -> Clim Chambre 1

FUNCTION BUTTON

General Details

Name

View Order

Visibility  Visible

Set Address

Read Address

Value Type 1 Bit

01

Icon Choose

L'ambiance de chambre 1

20 C

On/Off Clim

ON OFF

Heat Cool

AC Function Groups

Select AC Function Group SET TEMPERATURE GROUP

OK

Pour contrôler la température

Chambre 1 -> Clim Chambre 1

FUNCTION BUTTON

General Details

Name Set Temp

View Order 4

Visibility  Visible

New Save Delete

L'ambiance de chambre 1

20 C

On/Off Clim

ON OFF

Heat Cool

Set Temp

00 C

Fan Auto Low Mid High

Chambre 1 -> Clim Chambre 1

FUNCTION BUTTON

General Details

Name

Visibility  Visible

Set Address 0/2/8

Read Address 0/2/9

Value Type Value Offset\_C

Min Value 16

Max Value 30

Send Value Step 1

Remplir les adresses de ETS

L'icone de "-"

Chambre 1 -> Clim Chambre 1

FUNCTION BUTTON

General Details

Name Temp

Visibility  Visible

Read Address 0/2/9

Set Temp 00 C

Chambre 1 -> Clim Chambre 1

FUNCTION BUTTON

General Details

Name +

Visibility  Visible

Set Address 0/2/8

Read Address 0/2/9

Value Type Value Offset\_C

Min Value 16

Max Value 30

Send Value Step 1

Remplir les adresses de ETS

L'icone de "+"

Number	Name	Object Function	Description	Group Address	Data Type	Priority
1	Control On/Off [DPT_1.001]	0-Off, 1-On	ON/OFF	0/2/0	1-bit, switch	Low
2	Control Mode [DPT_20.105]	0-Auto, 1-Heat, 3-Cool, 9...	MODE COOL/HEAT	0/2/2	1-bit, cooling/heating	Low
3	Control Mode Cool/Heat [DPT_1.100]	0-Cool, 1-Heat	MODE COOL/HEAT	0/2/2	1-bit, cooling/heating	Low
12	Control Fan Speed/3 Speeds [DPT 5.010]	1 Speed1, 2 Speed2, 3 Sp...	FAN SPEED	0/2/4	8-bit unsigned value, counter pulses (0..255)	Low
13	Control Fan Speed Man/Auto [DPT 1.002]	1-Auto	FAN AUTO	0/2/6	1-bit, boolean	Low
14	Control Fan Speed 1 [DPT 1.002]	1-Set Fan Speed 1		0/2/6	1-bit, boolean	Low
15	Control Fan Speed 2 [DPT 1.002]	1-Set Fan Speed 2		0/2/6	1-bit, boolean	Low
16	Control Fan Speed 3 [DPT 1.002]	1-Set Fan Speed 3		0/2/6	1-bit, boolean	Low
18	Control Vanes U-D/5 pos [DPT 5.001]	0%-29% Pos1, 30%-49%		0/2/8	8-bit unsigned value, percentage (0..100%)	Low
27	Control Setpoint Temperature [DPT 9.001]	°C	TEMPERATURE	0/2/8	2-byte float value, temperature (°C)	Low
29	Control Ambient Temperature [DPT 9.001]	°C	TEMPERATURE D'AMBIAN...	0/2/10	2-byte float value, temperature (°C)	Low
30	Control Setpoint limitation [DPT 1.001]	0-Disable, 1-Enable		0/2/1	1-bit, switch	Low
51	Status On/Off [DPT_1.001]	0-Off, 1-On	ON/OFF FB	0/2/1	1-bit, switch	Low
52	Status Mode [DPT_20.105]	0-Auto, 1-Heat, 3-Cool, 9...		0/2/2	1-bit, HVAC control mode	Low
53	Status Mode Cool/Heat [DPT 1.100]	0-Cool, 1-Heat	MODE COOL/HEAT FB	0/2/3	1-bit, cooling/heating	Low
60	Status Fan Speed / 3 Speeds [DPT 5.010]	1-Speed1, 2-Speed2, 3-S...	FAN SPEED FB	0/2/5	8-bit unsigned value, counter pulses (0..255)	Low
61	Status Fan Speed Manual/Auto [DPT 1.002]	0-Manual, 1-Auto	FAN AUTO FB	0/2/7	1-bit, boolean	Low
62	Status Fan Speed 1 [DPT 1.002]	1-Fan is in speed 1		0/2/6	1-bit, boolean	Low
63	Status Fan Speed 2 [DPT 1.002]	1-Fan is in speed 2		0/2/6	1-bit, boolean	Low
64	Status Fan Speed 3 [DPT 1.002]	1-Fan is in speed 3		0/2/6	1-bit, boolean	Low
66	Status Vanes U-D/5Pos [DPT 5.001]	20%-Pos1, 40%-Pos2, 60		0/2/8	8-bit unsigned value, percentage (0..100%)	Low
75	Status AC Setpoint Temp [DPT 9.001]	°C	TEMPERATURE FB	0/2/9	2-byte float value, temperature (°C)	Low
76	Status AC Return Temp [DPT 9.001]	°C		0/2/9	2-byte float value, temperature (°C)	Low
77	Internal probe temperature [DPT 9.001]	°C		0/2/9	2-byte float value, temperature (°C)	Low
78	External probe temperature [DPT 9.001]	°C		0/2/9	2-byte float value, temperature (°C)	Low
80	Status setpoint Limitation [DPT 1.001]	0-Disable, 1-Enable		0/2/1	1-bit, switch	Low
81	Status Error/Alarm [DPT 1.005]	0-No Alarm, 1-Alarm		0/2/1	1-bit, alarm	Low
82	Error text code [DPT 16.001]	ASCII String		0/2/1	character string, Character String (ISO 8859-1)	Low
83	Status Operation Hour Counter [DPT 13.100]	Number of operating ho...		0/2/1	4-byte signed value, time lag (s)	Low

8] re 1 re 1

Chambre 1 -> Clim Chambre 1

FUNCTION BUTTON

General Details

Name

Visibility  Visible

Set Address

Read Address

Value Type Value Offset\_C

1

Icon Choose

L'ambiante de chambre 1  
20 C

On/Off Clim  
ON OFF

Heat Cool

Set Temp  
00 C

AC Function Groups

Select AC Function Group  
FAN SPEED BUTTONS GROUP

Custom Button Count  
4

Fan Speed OK

Chambre 1 -> Clim Chambre 1

FUNCTION BUTTON

General Details

Name: **FanAuto**

View Order: 1

Visibility:  Visible

Set Address: 0/2/6

Read Address: 0/2/7

Value Type: 1 Bit

Set Value(DEC): 01

Active Value(HEX): 01

**Fan Auto**

Chambre 1 -> Clim Chambre 1

FUNCTION BUTTON

General Details

Name: Low

View Order: 2

Visibility:  Visible

Set Address: 0/2/4

Read Address: 0/2/5

Value Type: 1 Byte

Set Value(DEC): 01

Active Value(HEX): 01

**Remplir les adresses de ETS**

Chambre 1 -> Clim Chambre 1

FUNCTION BUTTON

General Details

Name: Mid

View Order: 3

Visibility:  Visible

Set Address: 0/2/4

Read Address: 0/2/5

Value Type: 1 Byte

Set Value(DEC): 02

Active Value(HEX): 02

**Remplir les adresses de ETS**

Number	Name	Object Function	Description	Group Address	Data Type	Priority
1	Control On/Off [DPT_1.001]	0-Off, 1-On	ON/OFF	0/2/0	1-bit, switch	Low
2	Control Mode [DPT_20.105]	0-Auto, 1-Heat, 3-Cool, 9...			1-byte, HVAC control mode	Low
3	Control Mode Cool/Heat [DPT_1.100]	0-Cool, 1-Heat	MODE COOL/HEAT	0/2/2	1-bit, cooling/heating	Low
12	Control Fan Speed/3 Speeds [DPT 5.010]	1-Speed1, 2-Speed2, 3 Sp...	FAN SPEED	0/2/4	8-bit unsigned value, counter pulses (0..255)	Low
13	Control Fan Speed Man/Auto [DPT 1.002]	1-Auto	FAN AUTO	0/2/5	1-bit, boolean	Low
14	Control Fan Speed 1 [DPT 1.002]	1-Set Fan Speed 1			1-bit, boolean	Low
15	Control Fan Speed 2 [DPT 1.002]	1-Set Fan Speed 2			1-bit, boolean	Low
16	Control Fan Speed 3 [DPT 1.002]	1-Set Fan Speed 3			1-bit, boolean	Low
18	Control Vanes U-D/S pos [DPT 5.001]	0%-29% Pos1, 30%-49%...			8-bit unsigned value, percentage (0..100%)	Low
27	Control Setpoint Temperature [DPT 9.001]	°C	TEMPERATURE	0/2/8	2-byte float value, temperature (°C)	Low
29	Control Ambient Temperature [DPT 9.001]	°C	TEMPERATURE D'AMBIAN...	0/2/10	2-byte float value, temperature (°C)	Low
30	Control Setpoint limitation [DPT 1.001]	0-Disable, 1-Enable			1-bit, switch	Low
51	Status On/OH [DPT_1.001]	0-Off, 1-On	ON/OFF FB	0/2/1	1-bit, switch	Low
52	Status Mode [DPT_20.105]	0-Auto, 1-Heat, 3-Cool, 9...			1-byte, HVAC control mode	Low
53	Status Mode Cool/Heat [DPT 1.100]	0-Cool, 1-Heat	MODE COOL/HEAT FB	0/2/3	1-bit, cooling/heating	Low
60	Status Fan Speed / 3 Speeds [DPT 5.010]	1-Speed1, 2-Speed2, 3-Sp...	FAN SPEED FB	0/2/5	8-bit unsigned value, counter pulses (0..255)	Low
61	Status Fan Speed Manual/Auto [DPT 1.002]	0-Manual, 1-Auto	FAN AUTO FB	0/2/7	1-bit, boolean	Low
62	Status Fan Speed 1 [DPT 1.002]	1-Fan is in speed 1			1-bit, boolean	Low
63	Status Fan Speed 2 [DPT 1.002]	1-Fan is in speed 2			1-bit, boolean	Low
64	Status Fan Speed 3 [DPT 1.002]	1-Fan is in speed 3			1-bit, boolean	Low
66	Status Vanes U-D/S pos [DPT 5.001]	20%-Pos1, 40%-Pos2, 60...			8-bit unsigned value, percentage (0..100%)	Low
75	Status AC Setpoint Temp [DPT 9.001]	°C	TEMPERATURE FB	0/2/9	2-byte float value, temperature (°C)	Low
76	Status AC Return Temp [DPT 9.001]	°C			2-byte float value, temperature (°C)	Low
77	Internal probe temperature [DPT 9.001]	°C			2-byte float value, temperature (°C)	Low
78	External probe temperature [DPT 9.001]	°C			2-byte float value, temperature (°C)	Low
80	Status setpoint limitation [DPT 1.001]	0-Disable, 1-Enable			1-bit, switch	Low
81	Status Error/Alarm [DPT 1.005]	0-No Alarm, 1-Alarm			1-bit, alarm	Low
82	Error text code [DPT 16.001]	ASCII String			character string, Character String (ISO 8859-1)	Low
83	Status Operation Hour Counter [DPT 13.100]	Number of operating ho...			4-byte signed value, time lag (s)	Low

Chambre 1 -> Clim Chambre 1

FUNCTION BUTTON

General Details

Name: High

View Order: 4

Visibility:  Visible

Set Address: 0/2/4

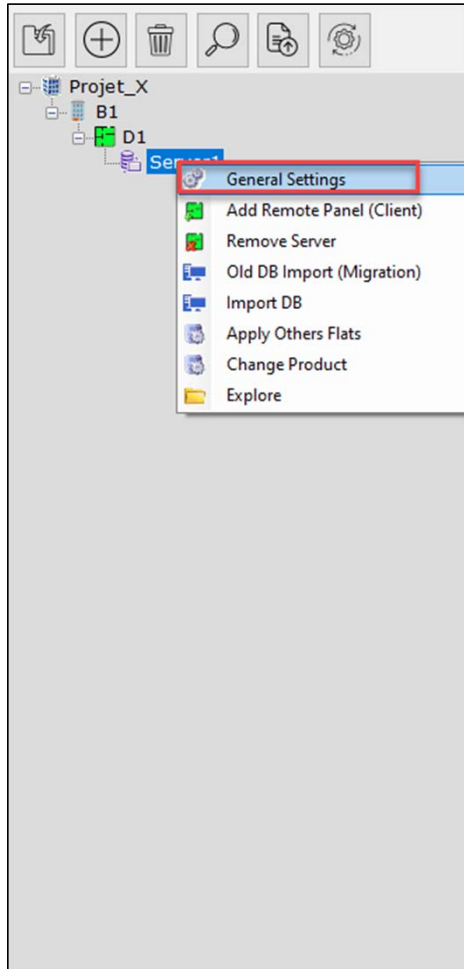
Read Address: 0/2/5

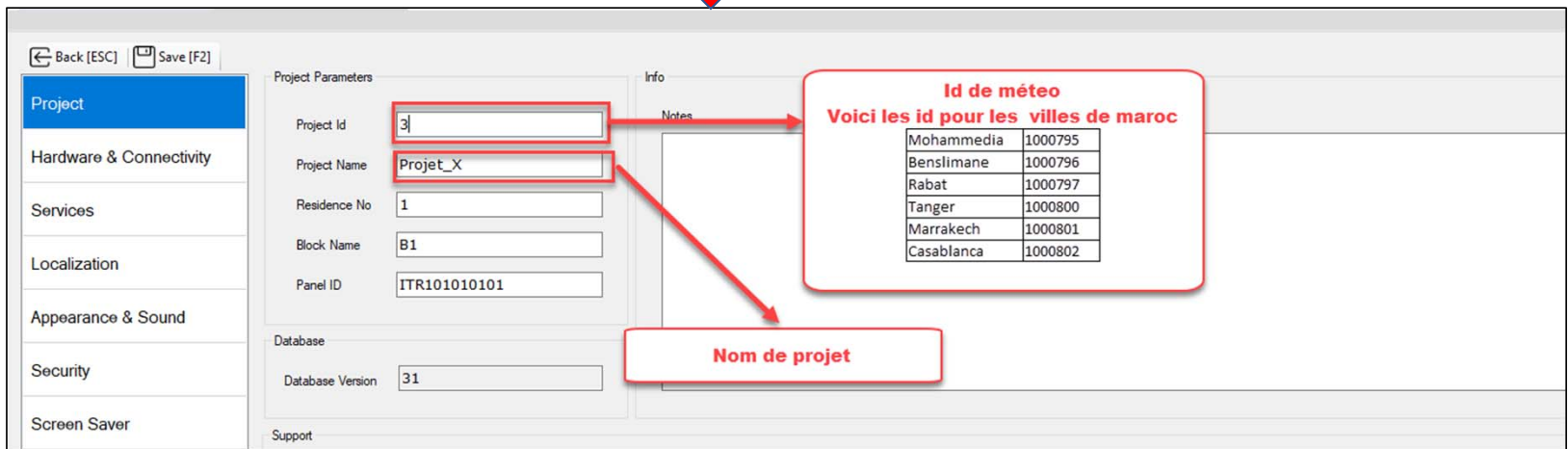
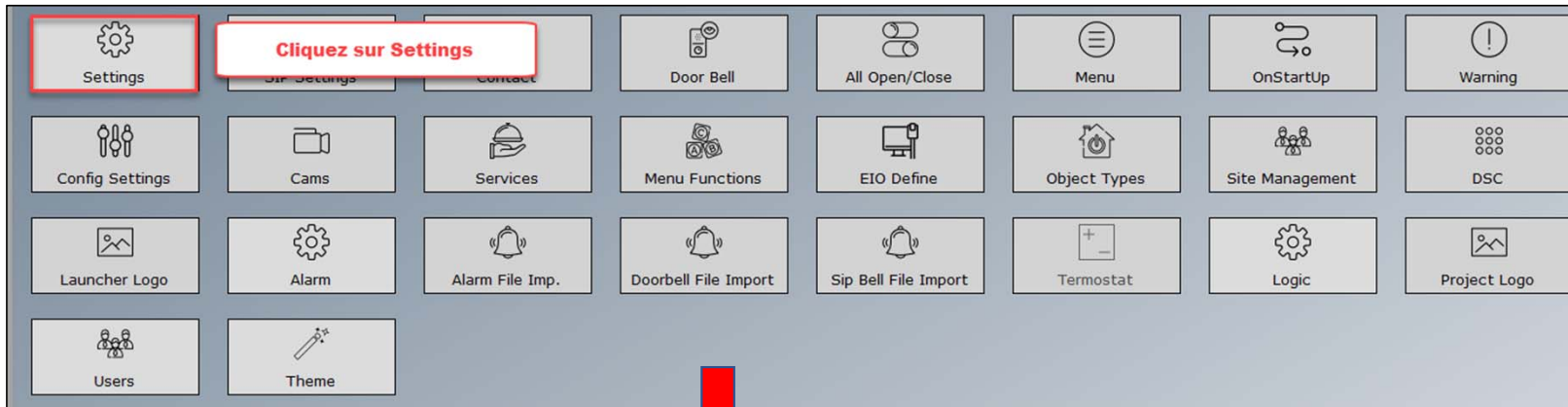
Value Type: 1 Byte

Set Value(DEC): 03

Active Value(HEX): 03

**Remplir les adresses de ETS**







Settings SIP Settings Contact Door Bell All Open/Close Menu OnStartUp Warning  
Config Settings Cams Services Menu Functions EIO Define Object Types Site Management DSC  
Launcher Logo Alarm Alarm File Imp. Doorbell File Import Sip Bell File Import Termostat Logic Project Logo  
Users Theme

Pour changer le nom de "Lighting", "Blind" et de "Air Condition" de l'anglais au français

Back [ESC] Save [F2] |||

General Details

Name  Visibility

Order

Preview	ViewOrder
PresetName	
DSC	0
LIGHTING	1
CURTAIN	2
BLIND	3
AIR CONDITION	4
GENERAL	5

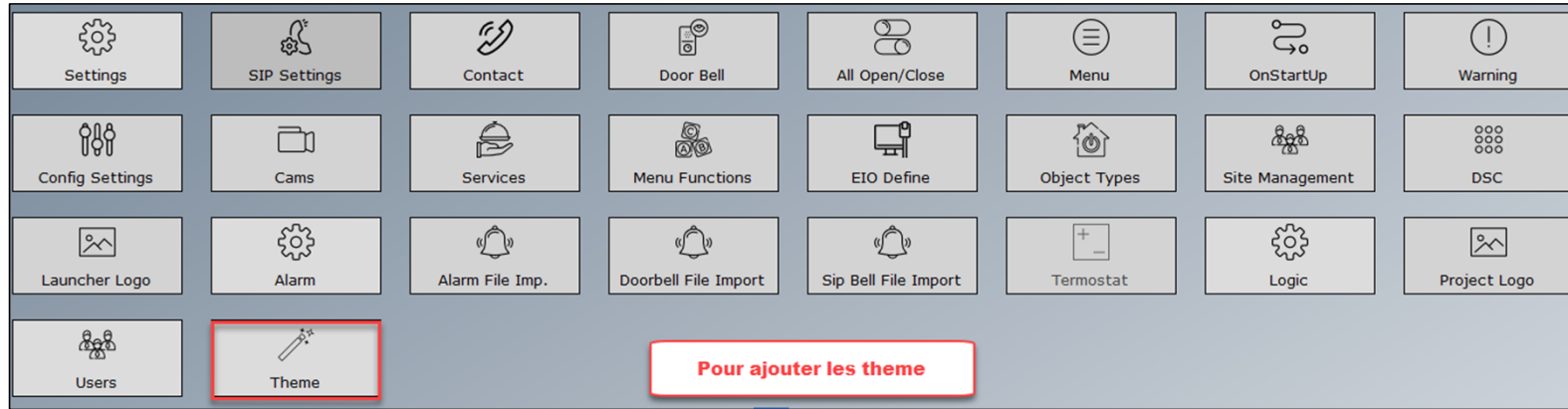
Back [ESC] Save [F2] |||

General Details

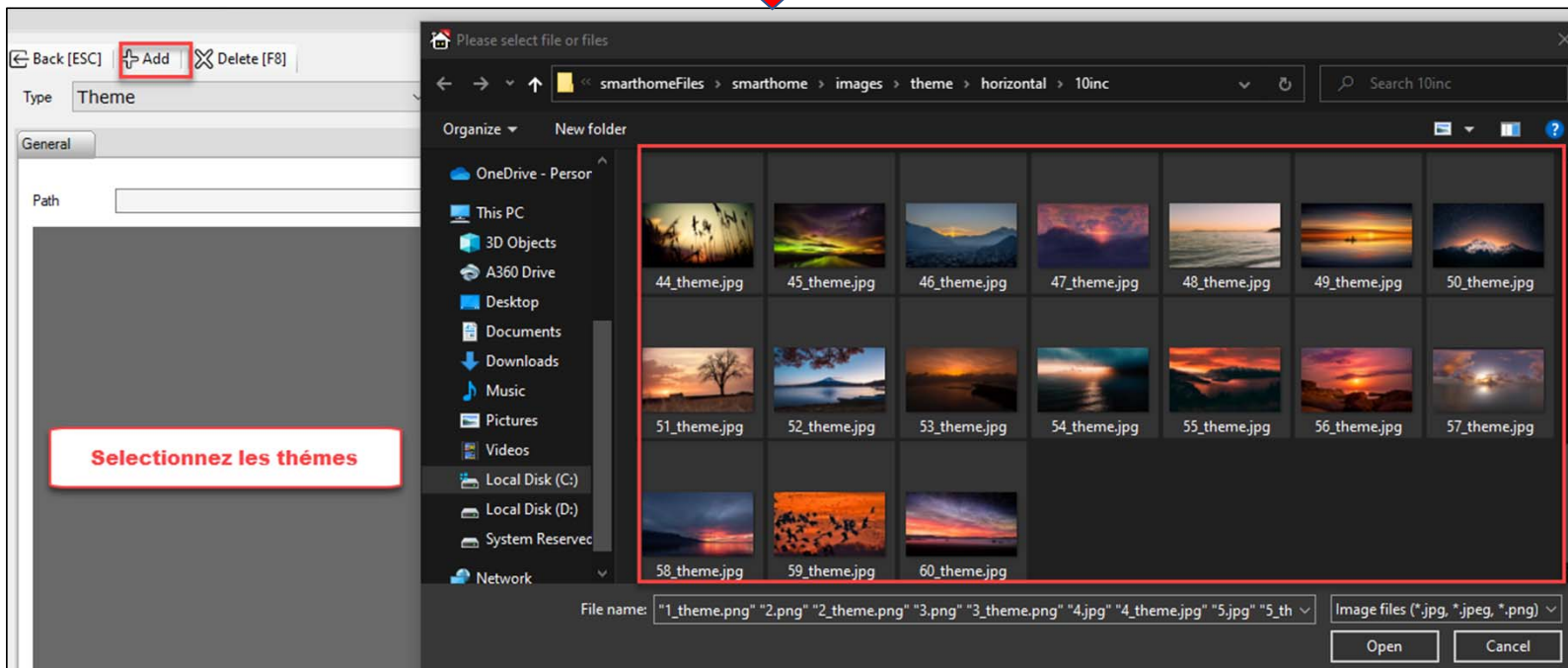
MultiLanguages

Turkish	AYDINLATMA
English	LIGHTING
Arabic	LIGHTING
Russian	LIGHTING
Azerb.	LIGHTING
Spanish	LIGHTING
German	LIGHTING
French	Eclairage
Kazakh	LIGHTING
Turkmen	LIGHTING
Persian	LIGHTING
Polish	LIGHTING
Hungarian	LIGHTING
Dutch	LIGHTING
Italian	LIGHTING
Portugues	LIGHTING
Romany	LIGHTING
Croatian	LIGHTING
Czech	LIGHTING





Pour ajouter les theme



The main menu consists of a grid of 32 icons arranged in four rows and eight columns. The icons are labeled as follows:

Settings	SIP Settings	Contact	Door Bell	All Open/Close	Menu	OnStartUp	Warning
Config Settings	Cams	Services	Menu Functions	EIO Define	Object Types	Site Management	DSC
Launcher Logo	Alarm	Alarm File Imp.	Doorbell File Import	Sip Bell File Import	Termostat	Logic	<b>Project Logo</b>
Users	Theme						

A red box highlights the 'Project Logo' icon in the third row, eighth column. A red arrow points from this box to a red-bordered callout box containing the text: **Pour ajouter logo de projet**.



The configuration window for the Project Logo is shown below. It features a toolbar at the top with the following elements:

- Back [ESC] button
- Add** button (highlighted with a red box)
- Delete [F8] button

Below the toolbar, there is a 'Type' dropdown menu set to 'Project Logo', a 'Select ALL' checkbox, and a 'Delete Selected' button.

The 'General' tab is active, showing a 'Path' input field.

